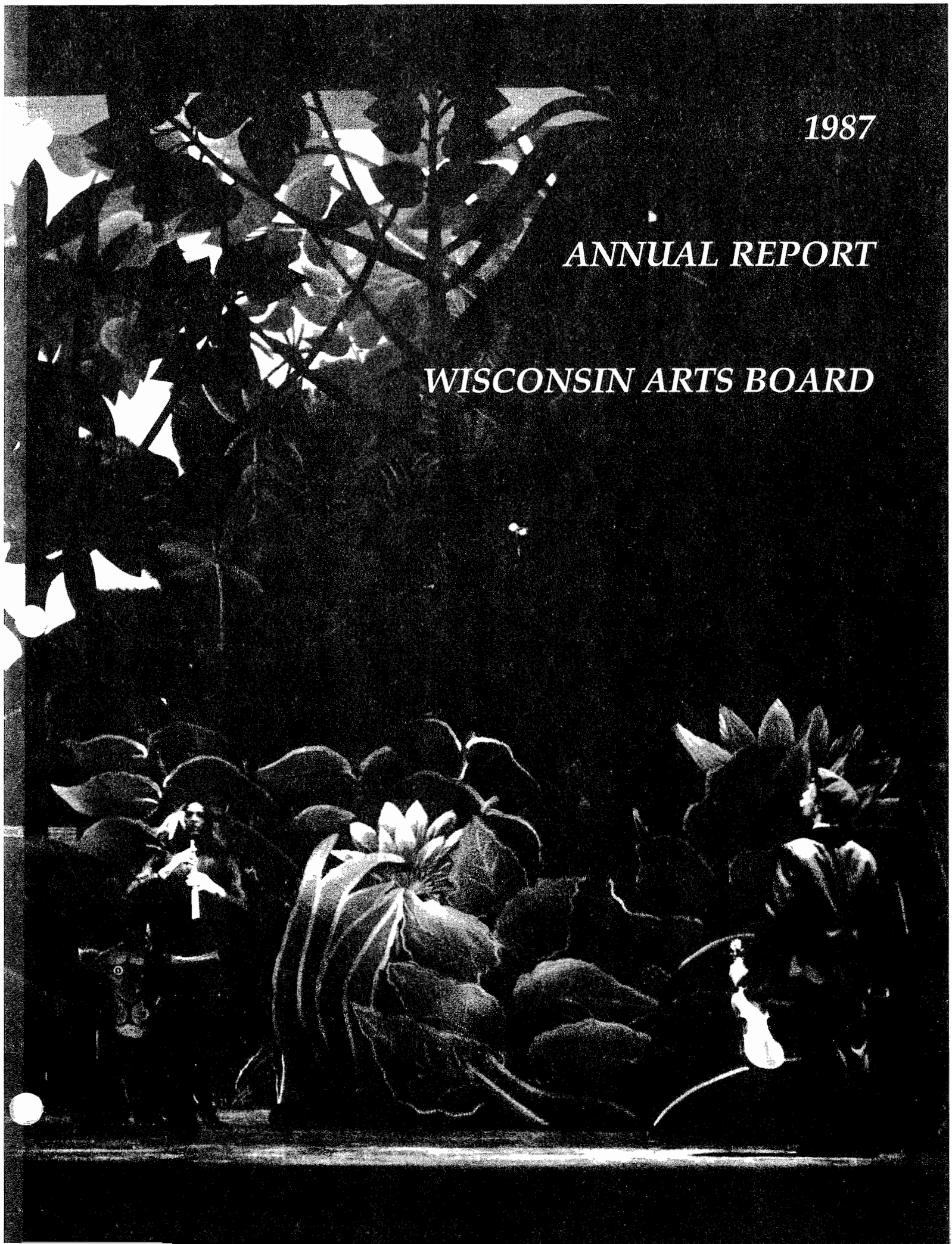


1987

ANNUAL REPORT

WISCONSIN ARTS BOARD



WISCONSIN ARTS BOARD 1987 ANNUAL REPORT

To the Honorable Tommy G. Thompson, Governor of the State of Wisconsin, and members of the Wisconsin State Legislature:

I have the honor to present to you the Annual Report of the Wisconsin Arts Board, an agency of the State of Wisconsin, for the fiscal year ended June 30, 1987.

Sincerely,



Arley G. Curtz
Executive Secretary



Arley G. Curtz

CONTENTS

Report from the Executive Secretary	1
The Wisconsin Arts Board in Brief	2
Programs	
Artistic Program Support	3
Artists-in-Education	4
Challenge Grant/Locals Test Program	5
Fellowships	6
Performing Arts Network-Wisconsin	7
Salary Assistance	8
Traditional and Ethnic Arts	9
Project Grants	
Individual and Organizational	10-11
Percent for Art	12
Grants Awarded in Fiscal Year 1987	13-18
Percent for Art Projects	19
Financial Report	20

REPORT FROM THE EXECUTIVE SECRETARY

Arley G. Curtz

The second year of the 1985-87 Biennium, July 1, 1986 — June 30, 1987 was an important and successful year for the arts and for the Wisconsin Arts Board.

An increase of more than \$300,000 in GPR (state) funds allowed the agency's grants programs to continue to reach more of our constituents.

A major planning effort by the agency began on July 31, 1986, when Board and staff reviewed agency programs, goals and fashioned a five-year plan. Goals included increasing Arts Board funding, strengthening arts organizations and the creative environment, increasing public awareness of the role and programs of the Board, a review of grants programs with possible restructuring, and making the arts a basic in education utilizing the agency's Artists-in-Education program. This document became a strategic planning tool for the remainder of fiscal year 1987, and beyond.

In the summer of 1986 the Wisconsin Arts Board was approached by state business leaders with the request that the WAB develop a program to leverage new private funding for the arts in Wisconsin. At the same time, the Wisconsin Arts Board was itself researching alternative methods for building on the success of the Wisconsin Challenge Grant/NEA Locals Test Program (see page 5).

In response to the business leaders and to its own knowledge of the needs of Wisconsin Arts organizations, the WAB designed the Arts Challenge Initiative. This program, beginning as a pilot in Central Wisconsin, will use state funds to leverage increases in income earned by and contributed to Wisconsin arts organizations.

It was through the active and positive support of Wisconsin Citizens for the arts that the Arts Challenge Initiative has become a reality. The WAB looks forward to offering this program to the state in the 1987-89 Biennium.

The November election brought a new Governor and administration. One of Tommy G. Thompson's first public appearances with a state agency was in January 1987 to award the WAB Fellowships at a ceremony at the WHA-TV studios in Madison. The ceremony was broadcast state-wide in the spring. Nine artists in visual arts,

literature, and music composition were given the awards by Governor Thompson.

The first legislation signed by the new Governor made an additional two million dollars available for tourism promotion in the state. The same bill also reorganized the Governor's Advisory Council on Tourism, creating an ex-officio position for the Executive Secretary of the Arts Board on the 15-member body. The linkages between arts and tourism, established in 1983 by the Joint Tourism and the Arts Committee of the Board and the Division of Tourism, and developed since then, were greatly strengthened. An extremely successful Tourism Conference in Madison, where the legislation was signed, signaled an important milestone in the partnership between the arts and tourism. Fully 20 percent of 500 people attending the February Conference represented some aspect of the arts.

In late March, the Arts Board received notice that its grant application to the Arts-in-Education program of the NEA, for planning funds to explore making arts a basic in education, was approved. The \$20,000 ASBEG (Arts in the Schools Basic Education Grant) grant which will end April 30, 1988, was matched equally by the Board and the Wisconsin Department of Public Instruction. This collaborative effort, a significant intra-agency project, clearly has gone a long way to highlight the important role the arts must play in educating the students of Wisconsin. My thanks to DPI for its solid support of arts and education.

In May, three new Board members were appointed by the Governor, and later a fourth. My appreciation goes to the hard-working, devoted members who left the Board: Pat Blankenburg, Madison; Benna Wilde, Beloit; Richard Hawkins, LaCrosse; and Karlyn Holman, Washburn. To new members, Olga Schleiter, LaCrosse; Kathy Vanatta, Port Edwards; Gloria Kirking; Portage and Kathryn Burke, Milwaukee, I welcome you.

In concluding, I wish to thank the Arts Board staff for the many, tireless hours given to promoting and developing the arts, for the expertise of countless advisory panelists and finally for the guidance, understanding, interaction, and energy of the members of the Board.

THE WISCONSIN ARTS BOARD IN BRIEF

The Wisconsin Arts Board (WAB) was established in 1973 by the Wisconsin Legislature to provide a diverse range of services designed to encourage and support the arts in our state.

The Wisconsin Arts Board consists of 12 citizen members appointed by the Governor and charged with developing the state's arts policy and approving all grant expenditures. The WAB programs and services are carried out by a professional staff, which includes an executive director; program coordinators in grants, community development and public relations, Artists-in-Education, Percent for Art, traditional and ethnic arts; and fiscal and support positions.

With funds from the state legislature and the National Endowment for the Arts, the WAB offers a broad range of information and technical services and extensive grant programs to individual artists and arts organizations.

Arts information and technical assistance services include: the artists' slide registry, a directory of Wisconsin visual artists; the *Bulletin*, a quarterly newsletter; the *Arts and Crafts Fair Directory*, an annual listing of Wisconsin art fairs; the *Wisconsin Arts Guide*, a joint project with the Wisconsin Division of Tourism listing attractions

throughout the state; conferences addressing topics such as community arts and arts education; and grant assistance meetings and workshops. Constituents also benefit from WAB's membership in Arts Midwest, a nine-state regional arts organization. Among its programs are The Jazz Referral Service, Meet the Composer, and Visual Arts Fellowships.

The grant programs complement the technical assistance and arts information services. The awards are administered through nine distinct programs and encompass every artistic discipline. Descriptions of these programs and highlights of the 1986-1987 fiscal year are covered later in this report.

Applications to all WAB grants programs are reviewed by panels of peers. Panelists are selected for their specialized knowledge and understanding of an arts discipline and for their experience in arts administration. Strong emphasis is placed on securing minority panelists and those from under-represented areas. It is the role of the panelists to provide expert assistance to the Wisconsin Arts Board in its grants-making decisions, and to help keep the Board informed of the artistic trends and needs affecting Wisconsin.

ARTISTIC PROGRAM SUPPORT

Artistic Program Support is designed to provide assistance to arts organizations whose primary mission is to create, produce and present arts programming that has a significant statewide impact.

This year ten organizations throughout the state received a total of \$304,000 in awards, providing an audience of over 571,000 with a new and distinctive arts experience.

These organizations used their Artistic Program Support grants to carry out a wide range of programs including exhibitions of Wisconsin folk art, symphony tours, classical theater, opera, and contemporary choreography.

With an Artistic Program Support award of \$34,799, the Milwaukee Ballet presented its highly

acclaimed work, *Virgin Forest*. Choreographed by Margo Sappington, the work was inspired by the jungle paintings of the French artist Henri Rousseau. The commissioning of this ballet not only allowed the dancers to participate in a completely original work, but also gave its audiences an opportunity to see the best of modern dance.

The Milwaukee Symphony Orchestra continued its tradition of touring throughout the state, funded in part with an APS grant of \$86,762. The Symphony gave twelve performances in Marinette, Eau Claire, Marshfield, Rhinelander, Janesville, Oshkosh, Madison and Ripon, bringing classical music to a new statewide audience.



Milwaukee Symphony Orchestra, Zdenek Mecal, Music Director.

ARTISTS-IN-EDUCATION

The Artists-In-Education Program brings artists and school communities together to foster a new understanding and appreciation of both art and audience.

During 1986-87, the program brought together 42 professional artists, 69,004 students, teachers and agency staff for hands-on arts experiences in 51 residencies. For the first time this year, schools were required to relate artists' activities to the curriculums mandated by the Department of Public Instruction.

Residencies were served in such diverse art forms as visual arts, photography, murals, theater, puppetry and mime, dance, music, music composition, creative writing, storytelling and folk arts. During the fiscal year, 10 sites hosted residencies

of 40 days or more, 30 sites sponsored residencies of 11-40 days and 11 residencies were 10 days or less. 47% of residencies were in Wisconsin's rural areas and 53% were in urban centers.

Residencies throughout the state allowed students and teachers to experience the arts in innovative ways. The Wisconsin School for the Visually Handicapped hosted Kanopy Dance Theatre in a residency which enabled students to choreograph their own dances based on movements derived from various sports.

Students at the Oneida Tribal School developed traditional hand beaded Iroquois costumes in a 20 day residency, while Artreach of Milwaukee sponsored a series of residencies at DePaul (a substance abuse treatment center), St. Mary's Hill Hospital (an adult psychiatric treatment center) and the Jewish Community Center.

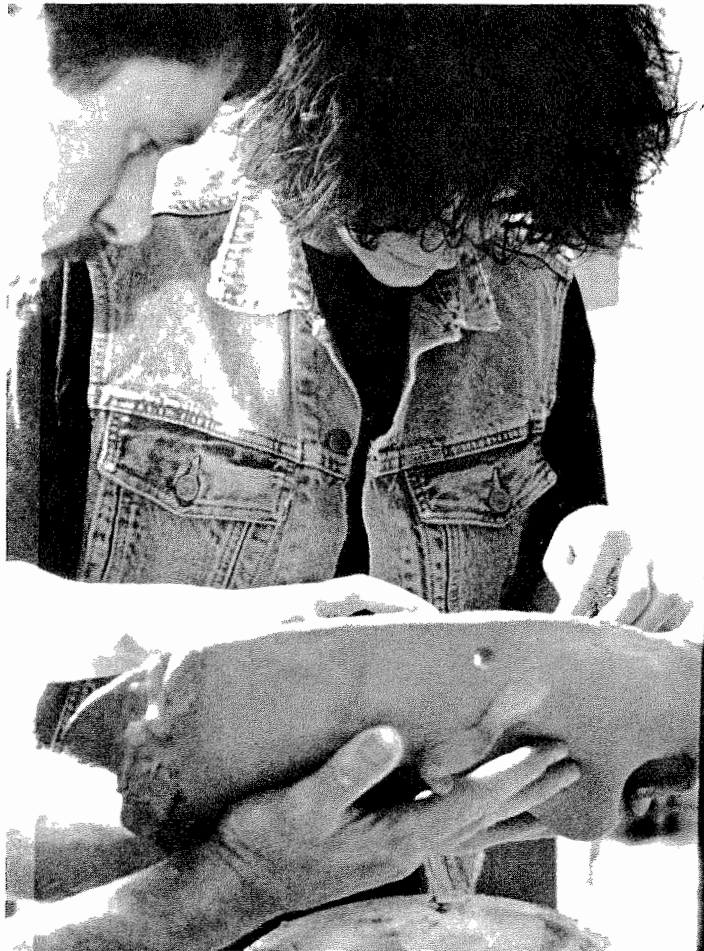
In addition, a pilot integrated arts residency, bringing together a visual artist, a mime troupe, a jazz composer and a creative writer took place over a three week period at Verona High School.

Partnerships with the Wisconsin Department of Public Instruction and the Wisconsin Alliance for Arts Education resulted in the sponsorship of two major projects.

The Arts Education Summit, co-sponsored by the Alliance and the WAB, was attended by 82 arts specialists, principals, curriculum directors, superintendents and representatives from arts professional groups and major arts institutions during February, 1987.

ARTSWORLD, a summer camp in the arts for talented high school students co-sponsored by DPI and the Wisconsin Arts Board, continued with one two-week and one week-long session for 182 students during June-July 1987.

The second year of the ARTSWORLD inservice program, also co-sponsored by DPI and WAB, was expanded to include two one-week sessions for teams of participants from a school or school district. The focus of the first session was on secondary curriculum development and special projects. The second session, attended by individual teachers, focused on K-12 curriculum development and special projects. The 67 session participants received graduate credits from UW-Platteville or recertification credits from DPI.



Artist Bill Grover (left) with Verona High School student.

CHALLENGE GRANT/LOCALS TEST PROGRAM

By most measures, the Locals Test Program, known in Wisconsin as the Challenge Grant Program, which concluded December 31, 1987, was an enormous success. The program, a three year partnership between the National Endowment for the Arts, the Wisconsin Arts Board, and local arts agencies in eight Wisconsin communities, had many goals, most of which were met.

The most spectacular achievement was the increase in local public and private funding for the arts. Over the course of the three years, the local organizations used the incentive of state/federal matching grants to leverage nearly \$4 million in new local private contributions and public appropriations to their organizations. Those new funds were matched with \$150,000 from the NEA and \$666,817 from the WAB. Altogether, the local, state and federal funds represent a monumental increase in support for the arts.

The other goals of the program—improvements in long-range program and financial planning, greater appreciation of the arts, increases in the quality and availability of the arts and improved cooperation among local arts organizations—are

not measured as easily as the one of leveraging increased and sustainable funding for the arts. However, the Arts Board has noted some remarkable changes that have occurred in the participating communities. In La Crosse, Milwaukee and Racine, the local arts organizations have gone beyond mere cooperation; they have formed viable alliances and developed strong annual united arts fund drives. Many organizations credit the program as an incentive to improve management structures. Several organizations have achieved levels of stability not thought possible before the program. And most of the local arts agencies used the program as a stepping stone to gain recognition in their communities, not only as arts leaders, but also as community leaders.

From the perspective of the Wisconsin Arts Board, the success of the Locals Test Program was a factor in the acceptance of the Arts Challenge Initiative program by the Wisconsin State Legislature. It is hoped that the participants in the FY88 ACI pilot will have the opportunity to achieve the same positive results.



Kim Faas, dance instructor, Pump House, La Crosse. Dance program made possible by participation in Challenge Grant/Locals Test Program.

FELLOWSHIPS



Carlton Thompson, Sr.

Wisconsin Arts Board Fellowships provide cash awards of \$5,000 to outstanding Wisconsin artists in the fields of visual arts, literature, music composition and choreography.

More than 100 artists have been awarded \$327,000 since the Fellowship program began in 1976.

Recipients are selected through a highly competitive jury process in which work samples are reviewed by nationally recognized experts in each discipline.

Three awards are made annually to both literary and visual artists. Two composition awards are presented in odd-numbered years, and two choreography awards in even-numbered years.

Gospel singer and songwriter Carlton Thompson, Sr., was one of nine artists awarded fellowships in 1987. Recipient of a music composition fellowship, Thompson draws upon a wealth of life experiences in his musical compositions, including employment as a music instructor, studio musician, production welder and punch press operator. His service as president and music director of the New Testament Church of Milwaukee and his volunteer work at various correctional institutions has had the most profound influence on his music. Fellowship jurors described his work as "displaying raw talent" and as being "solid and honest."

In an unusual decision, the jurors recommended three winners in music composition for 1987 and split the two advertised awards three ways. The other two recipients were Bradley Andrew Bombardier of Superior and Roscoe Mitchell of Madison.

Other 1987 Fellowship recipients included: Leslie Bellavance, Kristine Gunther and Carri Skoczek, all of Milwaukee, in visual arts; William Lawlor of Stevens Point, Steven Miller of Madison and Richard Terrill of Eau Claire in literary arts.

PERFORMING ARTS NETWORK-WISCONSIN (PAN-WISCONSIN)

The Performing Arts Network (PAN)-Wisconsin completed its fourth year of funding in 1986-87. One hundred seventy-five events, including public performances of theater, music, dance and the literary arts; workshops; master classes; lecture/demonstrations and artist residencies were made possible with the assistance of this Wisconsin Arts Board program. Twenty Wisconsin arts organizations, ranging from all-volunteer committees to arts councils to institutions of higher learning, were recipients of grants that partially funded the fees of the touring artists.

Designed as a community arts development program as well as a source of fee subsidies, PAN-Wisconsin has developed skilled presenters who work closely with their communities to provide events appropriate to them. The 1987 awards were granted on the basis of the artistic merit of a performing arts series, the administrative and marketing capabilities of the organization, and the strength of community involvement and support.

Through PAN-Wisconsin, audiences are able to enjoy the artistic excellence of state, regional, national and international touring performers in their own communities. A sampling of the 1986-87 seasons included Bob Berky at the Wausau Performing Arts Foundation, UW-Jazz Ensemble at the Monroe Arts and Activities Center, the National Marionette Theater at the Mabel Tainter in Menomonie, the Preservation Hall Jazz Band in Prairie du Chien, Friends Mime Theatre at UW-Barron County in Rice Lake, the Alvin Ailey Repertory Ensemble at UW-Platteville, Jeffrey Siegel at the Madison Civic Center, the Juilliard String Quartet at the Artist Series at the Pabst, the Peking Acrobats in Eagle River, Jack Daniels Silver Cornet Band at Viterbo College in La-Crosse, and the Skylight Comic Opera at Northland College in Ashland.



Wausau Grand Theatre, venue for the Performing Arts Foundation events (Photo-Wausau Daily Herald).

SALARY ASSISTANCE

Salary Assistance is one of the most competitive programs administered by the Wisconsin Arts Board. This program enables Wisconsin's non-profit arts organizations to hire new permanent artistic or administrative employees.

Such diverse organizations as the Madison Boychoir, the Red Cliff Cultural Institute in Bayfield and the Milwaukee Inner City Arts Council were awarded salary assistance grants in 1987. In all, 13 organizations received funding.

Grants may be awarded on a three-year declining scale. Awards of up to 50 percent of the salary are available the first year, up to 35 percent the second year and up to 25 percent the third year.

Folklore Village, an organization working to preserve the traditional culture of Wisconsin and the Upper Midwest, received salary assistance support for the first time this year.

Based in Dodgeville, the organization was able to hire the first permanent director for its Folklife Center. "This position was absolutely critical," Philip Martin, Vice President of Folklore Village said. "It has allowed us to begin the museum program and get out to the audience. It is like night and day."

Centro de la Comunidad Unida, Milwaukee's organization for Hispanic arts and culture, received second-year support to fund the position of Director of Cultural Arts.

TRADITIONAL AND ETHNIC ARTS

The Traditional and Ethnic Arts Program seeks to enhance the appreciation and ensure the continued vitality of Wisconsin's indigenous cultures. Traditional arts flourish in a multitude of groups whose common tie may be based on ethnic heritage, occupation, religion or locality. The program continued to build on past achievements and also launched new innovative efforts as well.

There continued to be strong interests in the Folk Arts Apprenticeship program in its third year. The program continued to emphasize the rare and unique traditional arts of Wisconsin Indian people, and grants were awarded to elder members of the Ojibwa, Menominee, Winnebago and Oneida tribes to teach their skills to enthusiastic apprentices. The eleven apprenticeships involved not only traditional crafts which have been supported in earlier years of the program, such as pounded black ash basketry, but also heretofore unrepresented genres such as Potawatomi flute carving, Ojibwa feather working and the making of the



Ruth Cloud, Baraboo, master artisan, Winnebago baskets.

Menominee fingerwoven beadwork funerary ornament "osakapun." The Folk Arts Apprenticeship program has helped broaden the knowledge of these arts forms, many of which had only a handful of practitioners. It has also contributed to the success of such events as the Wisconsin Indian Arts Festival, held annually in Eau Claire, and economic development efforts such as the recent establishment of the Woodland Indian Crafts Cooperative.

The initiative on traditional arts associated with dairy farming, which began in fiscal 1986, resulted in an exhibit of the paintings of Lavern Kammerude in the State Capitol and the presentation of the Governor's Heritage Award to that artist in November, 1986.

An initiative to increase minority participation in Arts Board programs was launched with a public meeting in Milwaukee in December, 1986 and a series of outreach and technical assistance efforts in 1987. The initiative no doubt contributed to the fact that minority artists and arts organizations received \$83,341 in grants or 7.5% of the total amount awarded.

In an innovative effort to showcase the traditional and ethnic music of Wisconsin, the Arts Board initiated a weekly radio broadcast, "Down Home Dairyland." The music of dozens of Wisconsin old time music ensembles was aired in south central Wisconsin. The program proved to be particularly popular in small towns and rural areas and has led to plans to produce the show for statewide broadcast over Wisconsin Public Radio.

"From Hardanger to Harleys: A Survey of Wisconsin Folk Art," a major traveling exhibit on which work was begun in the previous fiscal year by the John Michael Kohler Arts Center assisted by the Arts Board, came to fruition in 1987. The exhibit, which folklorist Robert Teske curated on the basis of material unearthed in a year-long collecting effort by folklorists James P. Leary and Janet Gilmore, opened in March, 1987 in Sheboygan and traveled to the State Historical Society Museum in Madison in June, 1987. The exhibit included over 200 artworks by 78 folk artists. The Kohler's files on the more than 200 folk artists documented in the survey and the 112 page exhibit catalogue are important resources for the development of Wisconsin folk arts.

PROJECT GRANTS

Project grants for individuals and organizations are awarded to help develop and strengthen artistic performance or product. Awards are made on a matching basis in the categories of community arts, dance, film and video, folk arts, literature, music, multidisciplinary arts, theater and visual arts.

In 1987, more than \$300,000 was awarded to 168 individuals and organizations throughout the state.

One of the most exciting projects funded this year was Milwaukee artist Terese Agnew's "The Visitation." The group of nine fiberglass sculptures of superheroes and angels was mounted on a cluster of storage silos and other sites in downtown Milwaukee.

Funded in part by a project grant of \$2,500, Black History, Inc. presented "The Wisconsin Connection: Black Artists Past and Present." Focusing on the relationship between art and

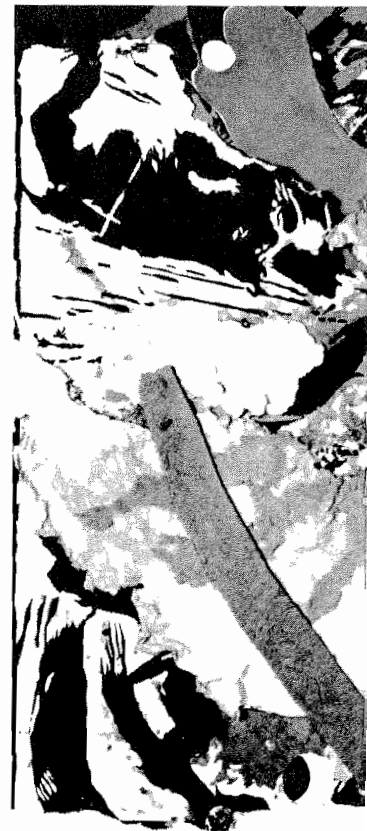
society, the project demonstrated the wealth of talent among Black artists associated with the state of Wisconsin. Selected artists discussed their work with the public, making for an unusual educational experience.

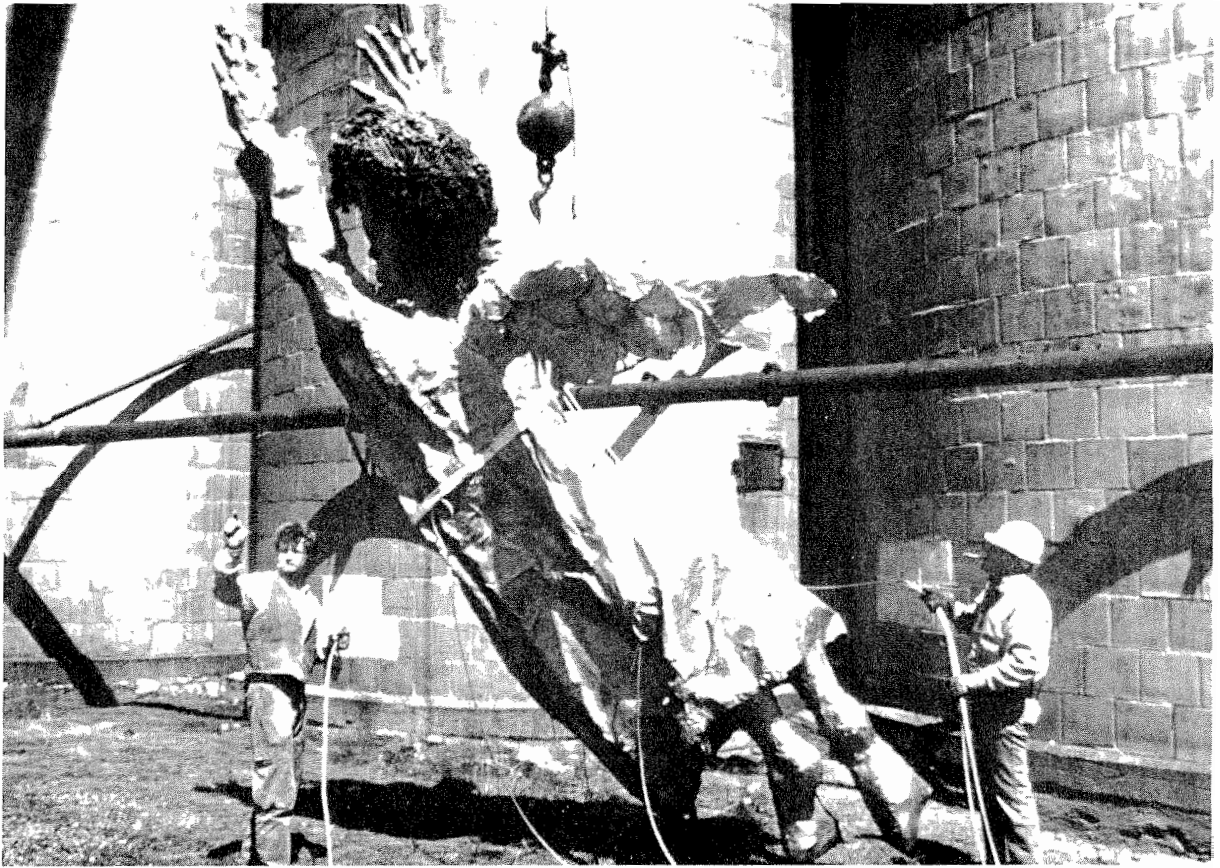
The "Beloit Fiction Journal" was able to further expand its audience and critical reputation with a project grant of \$2,093. The Wisconsin-based magazine publishes new contemporary short fiction by both established writers and talented newcomers.

The Greenwood Players Children's Theater created and presented *The Amazing Adventures of Ivan the Ninny* based on the Russian folk tale "Salt." The players gave nine performances at the Mabel Tainter Theater in Menomonie to a total of 2,700 children and adults. In addition, 44 classroom creative dramatics workshops were presented to 500 elementary school children who attended the show.



Greenwood Players Children's Theater





(Above) Angel from "The Visitation" by Terese Agnew.



(Left) "Untitled" by Robert Martin, from "The Wisconsin Connection: Black Artists Past and Present."

PERCENT FOR ART

Recognizing that art is an integral part of our environment, the Wisconsin Legislature in 1980 created a program that provided funds for the purchase or commission of original works of art for state-constructed public buildings.

Under the law, 2/10 of one percent of the funding for new state building projects costing \$250,000 or more must be used to acquire works of art by living artists, preferably from Wisconsin.



"Sentinel" ©, Robert Curtis, installed at UW-Stout.

The impact of this legislation is unique and important as public art has the potential to:

- humanize public spaces.
- create urban landmarks and markers of "place."
- celebrate the most positive manifestations of the human spirit.
- give support and recognition to contemporary visual artists.
- depict our aspirations and goals as a society—to create new symbols.
- memorialize.
- foster economic development.
- create new public spaces which re-energize urban centers.
- surprise and bewilder. Engage the public in discussion and debate and elicit controversy.
- provide an ever-expanding context for works of visual art.
- present private visions which could have a positive and regenerative effect for society in a public venue.

For each state building project, the Wisconsin Arts Board convenes an advisory committee to either choose works of art for direct purchase or select an artist (or artists) to be commissioned to create work especially for the site. Artists and artwork are sought through competitions administered by the Percent for Art program.

Fiscal year 1987 saw the installation of work of public art at fifteen locations around the state. Projects included major works of sculpture at the Columbia Correctional Institution, Portage, and the University of Wisconsin-Stout at Menomonie.

Site-specific works in a variety of media were commissioned for interior lobbies at Sparta's State Patrol Academy, the Havenwoods Environmental Center, Milwaukee, and the Oshkosh Correctional Institution among others.

A public plaza was designed by an artist for the University of Wisconsin-Madison Computer Science Center. Smaller movable works were added to the state's collection for the Department of Transportation and Department of Natural Resources. A special allocation was also made to commission a sculptural work for Madison's General Executive Facility 3 Plaza. Commissions and purchases totalled \$247,000.

GRANTS AWARDED IN FISCAL YEAR 1987

Key to Program Abbreviations

AIE	Artists in Education	FAP	Folk Arts Apprenticeship	OP	Organizational Project
APS	Artistic Program Support	FEL	Fellowship	PAN	Performing Arts Network-Wisconsin
CG	Challenge Grant	IP	Individual Project	SAL	Salary Assistance

AMHERST					
Amherst Elementary School					
AIE: Storytelling and Clowning, Joan Mosling	\$	498			
ANTIGO					
Pleasant View Elementary School					
AIE: 3D Ceramic Wildlife Mural, Lisa Walk Martin	\$	1,158			
APPLETON					
Jeff G. Boshart					
IP: Transitional Sculpture	\$	1,700			
Fox Valley Arts Alliance					
CG: Challenge Grant	\$	8,474			
ASHLAND					
David G. Genszler					
IP: Ice Blink	\$	1,500			
Northland College					
PAN: Northland College Arts & Letters Series	\$	7,347			
BARABOO					
Ruth Cloud					
FAP: Winnebago basket weaving	\$	1,820			
BAYFIELD					
Red Cliff Cultural Institute					
OP: A Summer of Ojibwa Artists at the Buffalo Art Center	\$	5,000			
SAL: Director, Buffalo Art Center	\$	5,774			
BEAR CREEK					
St. Mary School					
AIE: Study of folk music, dance and art with Bob & Becky Wernerehl	\$	439			
BELOIT					
Beloit College					
PAN: Beloit College Performing Arts Series 1986-1987	\$	2,500			
Beloit Fiction Journal					
OP: BELOIT FICTION JOURNAL, Volume II, Number 2	\$	2,093			
Beloit-Janesville Symphony					
OP: BJSO Spring Choral Finale	\$	866			
Robinson School PTSA					
AIE: Story Bridges - Promoting Cultural Awareness, Sari & Reid Ross	\$	1,970			
BIRCHWOOD					
AWARE Community Council					
OP: Aware Day	\$	1,000			
BLACK EARTH					
Wisconsin Rural Development Center					
OP: 1986 Wisconsin Family Farm Day	\$	3,000			
BOSCOBEL					
Boscobel Elementary School					
AIE: Developing Creative Expression in the Boscobel Elementary School, Nancy Lanyon	\$	534			
AIE: Roxanne Neat & David Stoeri	\$	1,083			
OP: Wisconsin Heritage	\$	1,000			
BROWN DEER					
Brown Deer Middle School					
AIE: AN EXPRESSION OF LIFE, Friends Mime Theatre	\$	1,035			
CAMBRIDGE					
Dierdre Kaye Luzwick					
IP: Christ-Kin . . . A Community Gospel	\$	1,190			
IP: Christ-Kin . . . A Community Gospel	\$	1,500			
CEDARBURG					
Parkview Elementary School					
AIE: Community Development, Fool's Moon	\$	909			
CHIPPEWA FALLS					
James Razer					
FAP: Traditional Ojibwa	\$	1,708			
CRANDON					
William Jackson					
FAP: Potawatomi Flute making & playing	\$	955			
CROSS PLAINS					
Wisconsin Alliance for Composers Inc.					
OP: Publ/Dist of Wisconsin Alliance for Composers Music Catalog	\$	475			
DE PERE					
Westwood Elementary School					
AIE: An Interdisciplinary Approach to the Arts in Education, Stephen A. Titra	\$	862			
DODGEVILLE					
Folklore Village					
SAL: Director, Wisconsin Folklife Center	\$	9,000			
Symphony School of America Inc.					
OP: Wisconsin Offering of the Fine Arts Quartet	\$	1,351			
DULUTH					
Depot Outreach - St. Louis Co.					
OP: Wisconsin Expansion of Depot Outreach	\$	2,000			
EAGLE RIVER					
Headwaters Council for the Performing Arts					
PAN: Headwaters Council for the Performing Arts Series	\$	5,000			
EAU CLAIRE					
Chippewa Valley Museum					
AIE: Chippewa Valley Museum Residency with Artists, Reid Miller	\$	3,075			
South Junior High School					
AIE: String Performer, Jazz Musician & Composer Sharing Art, Randy Sabien	\$	570			
Richard Terrill					
FEL: Literary Arts-Essay/Criticism	\$	5,000			
Wisconsin Council of Teachers of English					
OP: Poetry - The Beginning and the End	\$	377			
ELM GROVE					
Young Audiences of Wisconsin					
OP: Expansion of YA programs to remote area schools	\$	2,320			
FAIRCHILD					
Mary Thunder					
FAP: Winnebago basketry	\$	1,820			

FISH CREEK

Gibraltar Area Schools
 AIE: Friends Mime Theatre at Gibraltar
 Schools, Friends Mime Theatre \$ 1,313
 Gibraltar Elementary School
 AIE: Folksinger/Storyteller, Dan Keding \$ 693

FOND DU LAC

Fond du Lac Community Band Ltd.
 OP: 1986 Area Performances Project \$ 2,100
 Fond du Lac Jazz Festival Foundation
 OP: Fond du Lac Jazz Festival \$ 1,500
 Fond du Lac Music Parents' Inc.
 AIE: Improvisation/Composition
 Residency, John Harmon \$ 2,318

FORT ATKINSON

Fort Atkinson Arts Council
 AIE: Photography Residency, Steven Agard \$ 1,278

GAYS MILLS

North Crawford School District
 OP: Sotavento Concerts \$ 830

GLENDALE

Martha Bergland
 IP: AN OUTWARD SIGN OF AN
 INWARD STATE \$ 1,777

GREEN BAY

Green Bay Symphony Orchestra
 OP: Premier performance of new music
 commissioned by GBS \$ 1,250
 Northeastern Wisconsin Arts Council
 OP: Artstreet/Community Art Installation \$ 5,300
 OP: Green Bay Photographic Survey Project \$ 2,500
 CG: Challenge Grant \$11,048

St. Jude School

AIE: UNDERSTANDING THE CLOWN IN EACH
 OF US, Friends Mime Theatre \$ 1,511

Peter Stambler

IP: TOWARD GREENHAM - a novel \$ 2,320

UW-Green Bay

PAN: Visiting Artists Series \$10,000

GREEN LAKE

Green Lake Festival of Music
 OP: Season Finale Concerts \$ 1,500

HAYWARD

Dick Brooks
 IP: THE JOURNEY HOME \$ 2,000

WOJB-FM

OP: Northwest Wisconsin
 Performing Arts Network \$ 1,000

HOWARDS GROVE

Howards Grove Elementary Schools
 AIE: AIE-DANCE, Cathy Kaemmerlen \$ 804

IXONIA

Debra G. Loewen
 IP: Wild Space Dance Project \$ 1,000

JANESVILLE

Monroe Elementary School
 AIE: Majestic, Tom Arie-Donch \$ 5,484
 Wisconsin School of Vis. Handicapped
 AIE: Kanopy Dance Theater,
 Kanopy Dance Inc. \$ 2,504

JEFFERSON

Council for the Performing Arts
 OP: Arts in Education \$ 2,990

KENOSHA

Michael Schumacher
 IP: GINSBERG: A CRITICAL BIOGRAPHY \$ 600

KESHENA

Gerald Frances Hawpetoss
 FAP: Menomoninee Osakapun \$ 1,820

LA CROSSE

La Crosse Community Theatre
 OP: Adult and Children's Education
 and Outreach \$ 1,400
 La Crosse Symphony Orchestra
 OP: Music for Youth and Seniors \$ 1,450
 Viterbo College
 PAN: 1986-87 Bright Star Season \$10,000
 Western Wisconsin Regional Arts
 OP: TV Art Reach \$ 1,430
 CG: Challenge Grant \$11,880
 PAN: Presentation of Artists & Performances \$ 2,509

LAC DU FLAMBEAU

Josephine Doud
 FAP: Ojibwa moccasin making \$ 1,638

LADYSMITH

Flambeau Valley Arts Association
 PAN: Flambeau Valley Arts Association
 86-87 Concert Series \$ 2,000

LAKE NEBAGAMON

Nebagamon Comm. Association, Inc
 OP: Fine Arts Exhibition \$ 422

LONE ROCK

Charles Munch
 IP: Outer/Inner Sanctum
 (Paintings in Architectural Space) \$ 492

MADISON

Black History Inc.
 OP: THE WISCONSIN CONNECTION:
 BLACK ARTISTS PAST & PRESENT \$ 2,500

Broom Street Theatre Ltd.

OP: Production Supplies & Materials
 for THE HANGWOMAN \$ 3,722

Center for Arts Administration

OP: Center for Arts Administration
 Symposium #15 \$ 600

Centro Hispano

OP: Fiesta Hispano 86 \$ 1,000

Children's Theatre of Madison

OP: THE DANCING MAN - play for
 pre-school children \$ 1,500

Laurie Beth Clark

IP: Four Variations on a Theme \$ 2,000
 IP: The Un/Employment Projects (Part Four) \$ 2,000

Charles Connors

FAP: Ojibwa featherwork \$ 1,359
 Creative Arts Over 60 Inc.

OP: Arts in Senior Housing and Centers \$ 3,000

Ebony Expressions

OP: SOUTHSIDE STORY \$ 1,000

Luis Echevarria

IP: Latin America: Poetry, History and Literature \$ 620

Bacia Edelman

IP: Alternative ceramic finishes and
 clay wall reliefs \$ 2,000

Finnish American Society

OP: Talk 'N Tunes in Superiorland \$ 3,500

Frank Allis Elementary School

AIE: Kanopy Dance - Frank Allis Elementary
 School, Kanopy Dance Inc. \$ 1,975

Frederick J. Heide Ph.D.

IP: Creation of a Folk Musical/
 Theatrical Production \$ 1,000

Spencer Irvine

IP: Hands around the World \$ 1,000

Kanopy Dance Inc.			Olbrich Botanical Society		
OP: Choreographers Concerts	\$ 1,000		OP: Sculpture - "Fiddlehead Fern"	\$ 1,000	
OP: Gibraltar Area Dance Project	\$ 1,100		Opera for the Young		
OP: Concerts for School Children	\$ 700		OP: THE ITALIAN GIRL IN ALGIERS	\$ 1,200	
OP: New Repertory	\$ 6,393		Postsecondary Re-Entry Ed Program		
Steven Agard & Lewis Koch			OP: Inside the Walls: A Program Series for KMCI & TCI	\$ 750	
IP: THE COUNTY SEEN: TWO PHOTOGRAPHERS' VIEWS	\$ 2,000		R. Bean's Voice Theatre Ltd.		
La Follette High School			OP: WISCONSIN: WESTERN WILDERNESS	\$ 3,164	
AIE: Secondary School AIR in Dance/ Creative Movement, Jamie McHugh	\$ 3,000		Jocelyn Riley		
Angela Lobo-Cobb			IP: HER OWN WORDS: DANE COUNTY PIONEER WOMEN'S DIARIES	\$ 2,000	
IP: Winter Nest: a poetry anthology of mid-western women	\$ 3,242		TAP-IT Dancing & Theatrical Co.		
M.M. Colbert Modern Ballet			OP: THE ADVENTURES OF MIGHTY MOUSE	\$ 500	
OP: ASSEMBLY REQUIRED: ROBOT ENCLOSED	\$ 1,500		Prof. William H. Tishler		
Madison Art Center			IP: ART ON THE LAND: THE WISCONSIN HIST LANDSCAPE SURVEY	\$ 2,400	
OP: African Masterpieces from Munich	\$ 4,500		United Madison Community Foundation		
OP: American Realism: 20th Century Drawings & Watercolors	\$ 3,000		CG: Challenge Grant	\$73,498	
OP: Mini-Museum	\$ 4,000		Very Special Arts - Wisconsin		
OP: Wisconsin Triennial	\$ 5,000		OP: Training Accreditation Program (TAP)	\$ 2,000	
SAL: Associate Curator for Exhibitions & Collections	\$13,475		Elisabeth Babette Wainwright		
Madison Boychoir Inc.			IP: Caribbean Women Celebrated	\$ 2,020	
SAL: Executive Director - Administrative	\$ 1,995		Wisconsin Chamber Orchestra		
Madison Civic Center			OP: Wisconsin Chamber Orchestra Youth Concerts	\$ 1,000	
AIE: "Miko" Residency, Bronislaw Machalski	\$ 3,510		OP: 1986-87 Wisconsin Chamber Orchestra, Inc.	\$ 1,750	
PAN: Program Expansion	\$ 6,000		SAL: Director of Development & Fund-Raising	\$ 4,900	
OP: Access to the Arts - Expansion	\$ 2,000		MANITOWOC		
Madison Festival of the Lakes			Rahr-West Art Museum		
OP: Technical Support for Festival Performances & Exhibits	\$ 2,000		AIE: Papermaking as a Craft and Fine Art, Kirsten McClintock-Christensen	\$ 2,393	
Madison Filmmaker's Collaborative			Roncalli High School		
OP: Independent Film & Video Screenings & Instruction	\$ 500		AIE: Artist in resident-area Catholic grade/high schools, Bill Grover	\$ 1,857	
Madison Folk Music Society			MARSHFIELD		
OP: Fourth Madison Folk Singing Festival	\$ 750		Central Chamber Chorale		
Madison Memorial High School			OP: Central Chamber Chorale 1986-87 Season	\$ 750	
OP: Madison Youth Poetry Festival	\$ 300		Fine Arts Gallery		
Madison Metropolitan School District			OP: Fine Arts Gallery 86-87 Exhibition Schedule	\$ 1,000	
AIE: Connections: An Artist's Residency, Patricia A. Scobey	\$ 4,760		MATTOON		
Madison Music Collective Inc.			Mattoon Elementary School		
OP: Madison Music Collective Presents	\$ 1,000		AIE: The Creative Process of Theatre, Joan Mosling	\$ 879	
Madison Repertory Theatre			MENASHA		
OP: Stage Two - Works in Process	\$ 1,500		Fox Valley Symphony Orchestra		
Madison Scottish Country Dancers			OP: Choral Concert-Subscription Concert #3	\$ 500	
OP: Scottish Ethnic & Cultural Weekend	\$ 1,000		MENOMONEE FALLS		
Madison Symphony Orchestra			Jeanine Semon		
OP: Madison Symphony Orchestra School Concerts	\$ 1,250		IP: Cross-Cultural Arts Performance	\$ 1,500	
Madison West High School			MENOMONIE		
AIE: Dance - Residency, Christine Stevens	\$ 1,600		Greenwood Players Children's Theatre		
Sandra Mathern-Smith			OP: Creating Plays for Children through Improvisation	\$ 3,722	
IP: Summer in the Parks - Dance Event	\$ 885		Mabel Tainter Memorial Theater		
Melrose Motion Company			PAN: Performing Arts Series for Community Theater	\$ 3,253	
OP: Wisconsin Tour - Melrose Motion Company	\$ 3,000		Lee Spinosa		
Mendota Elementary School			IP: Stoneware Sculpture Medium Transfer to Bronze	\$ 1,000	
AIE: Northside Folk Arts Festival and Slide Show, Fool's Moon	\$ 6,100		MIDDLETON		
Stephen M. Miller			Mesoghios Dance Troup Inc.		
FEL: Literary Arts-Poetry	\$ 5,000		OP: Greek Folk Synthesis I	\$ 1,000	
Roscoe Mitchell					
IP: Sketches from the Bamboo Terrace	\$ 1,000				
FEL: Music Composition - Chamber	\$ 3,333				

MILWAUKEE

ARTREACH Milwaukee, Inc.		Patricia Hutchings	
AIE: The Inside Story, Louisa Loveridge-Gallas	\$ 1,930	IP: This Came for You While You Were Gone: Poems of Address	\$ 997
OP: In Flight	\$ 3,100	India Music Society	
OP: The Phoenix Collection: Images for the Changing Person	\$ 4,000	OP: Music of India	\$ 1,600
OP: Musical Interludes	\$ 1,900	John Audubon Middle School	
SAL: Development Manager (Administrative)	\$10,800	AIE: Social Living I, Fool's Moon	\$ 2,190
Terese Marie Agnew		Alice H. Klein	
IP: The Visitation	\$ 3,000	IP: The Colored Gold, Stones and Acrylic Project	\$ 1,000
Artist Series at the Pabst		Lincoln Avenue School	
PAN: Assistance to present 86-87 performance series	\$ 5,000	AIE: Coming to our Senses: A Creative Journey, Louisa Loveridge-Gallas	\$ 3,594
Association of Wisconsin Symphony Orchs		Lousia May Alcott Elementary School	
OP: Keeping the Arts Alive - A one-day workshop	\$ 500	AIE: Creative Writing and Bookmaking, Susan Gardels	\$ 1,548
Bauer Contemporary Ballet		Moe Meyer	
OP: Season Development & Implementation	\$ 4,000	IP: Documentation of Hardwerk	\$ 780
Bel Canto Chorus of Milwaukee Inc.		Milwaukee Art Museum	
OP: Mendelssohn's "ELIJA", Robert Page, Guest Conductor	\$ 2,500	APS: Operation Outreach	\$31,500
Leslie Bellavance		Milwaukee Artists Foundation	
IP: Natural Wonders: A Series of Installations	\$ 1,000	CG: Challenge Grant	\$24,116
FEL: Visual Arts-Photography	\$ 5,000	OP: Showcasing Art	\$ 4,500
Taffie Bogart		SAL: Development Director/Administrative	\$ 8,400
IP: A Museum of Sexuality	\$ 2,950	Milwaukee Ballet	
Centro de la Comunidad Unida		APS: Margo Sappington Ballet: VIRGIN FOREST	\$34,799
SAL: Cultural & Arts Director	\$ 6,475	Milwaukee Boys & Girls Club	
Clavis Theatre Inc.		OP: Arts in the Park	\$ 2,000
OP: Artist Development during the 1986-87 Season	\$ 2,000	Milwaukee Chamber Theatre	
OP: Artist Development during the 1986-87 Season	\$ 2,000	SAL: General Manager	\$ 3,220
Colorlines Foundation Inc.		OP: Fifth Shaw Festival	\$ 2,500
OP: Colorlines Magazine Black History Edition & Marketing Project	\$ 2,960	Milwaukee Inner City Arts Council	
OP: Black Arts Experience (BASE)	\$ 3,000	OP: Annual Black Arts Celebration	\$ 1,500
Concord Chamber Orchestra		SAL: Director of Development	\$ 8,248
OP: Subscription Concert with Guest Artist-D Ruhstrat	\$ 1,000	Milwaukee Music Ensemble	
Dancecircus Ltd.		OP: MME - Touring & Audience Development	\$ 1,000
OP: I-94 Interchange/Exchange	\$ 700	OP: World Premieres of Wisconsin Composers	\$ 2,842
OP: Wordprints: A Concert of Dances from Poetry	\$ 5,118	SAL: Director of Development	\$ 3,438
Mary Catherine Deicher		Milwaukee Public Library	
IP: REUNION: A Concert of Contemporary Dance Works	\$ 1,000	AIE: 1987 Poetry Concert, Ann Filemyr	\$ 2,227
Carol Dines		Milwaukee Repertory Theatre	
IP: What I Tell Myself When I'm Asking (Kisses on the Wind)	\$ 2,436	APS: Focus on Wisconsin	\$49,500
Florentine Opera Co.		Milwaukee Symphony Orchestra	
APS: Mainstage Productions	\$13,500	APS: MSO Wisconsin Touring	\$86,762
Friends Mime Theatre		Musica da Camera	
OP: FMT Artistic Development Project	\$ 9,000	OP: California E.A.R. Unit Concert	\$ 2,000
OP: FMT 1986/87 Statewide Touring Project	\$ 6,570	Next Generation Theater	
Friends of the Hispanic Community		OP: Production of "REALLY ROSIE" a musical by Sendak & King	\$ 1,000
OP: Lo Del Corozon: Heartbeat of a Culture	\$ 750	Paradox Studio Theatre Inc.	
Great Lakes Film & Video Inc.		OP: PLAUSIBLE DENIAL	\$ 750
OP: Community Media Projects- Home & the World Film Series	\$ 1,000	OP: BIRD IN DOG JUNGLE	\$ 4,188
OP: 1986 Great Lakes Film & Video Festival	\$ 3,000	People's Theatre Inc.	
SAL: Managing Director	\$ 2,800	OP: Folk Music Poetry Show - Grand Tour	\$ 1,000
Great Lakes Opera Company		Roosevelt Middle School of the Arts	
OP: 7 Performances of AMAHL & THE NIGHT VISITORS	\$ 2,000	AIE: Visualizing Art History	\$ 4,300
Kristine I. Gunther		Julie Lindemann & John Shimon	
FEL: Visual Arts-Painting	\$ 5,000	IP: St. Nazianz Project	\$ 1,000
		Sue Silvermarie	
		IP: Look Mama, The Mailman is a Girl	\$ 1,777
		Carri M. Skoczek	
		FEL: Visual Arts-Painting	\$ 5,000
		Skylight Comic Opera, Ltd.	
		APS: Rehearsal Process Support	\$13,500
		Theatre Tesseract Inc.	
		OP: Special Viet Nam Veteran Performance of STRANGE SNOW	\$ 800

Theatre X Inc.
 OP: The History of Sexuality - Exploration \$ 5,500
 SAL: Managing Director \$ 5,775
 Carlton Thompson, Sr.
 FEL: Music Composition \$ 3,333
 UW-Milwaukee
 OP: Jean-Baptiste Lully 300th Anniversary
 Concert of Music & Dance \$ 2,000
 OP: Professional Theatre Training
 Program Spring 1987 \$ 3,000
 UW-Milwaukee Art Museum
 OP: Scarborough/Dusseldorf Exhibition \$ 1,586
 Carole Vopat
 IP: THE COOKIE STORIES \$ 1,751
 Wisconsin Chamber Players
 OP: Touring Residencies and Concerts \$ 1,225
 Wisconsin Opera Theater
 OP: EVERYTHING YOU KNOW ABOUT
 OPERA BUT NEVER KNEW YOU KNEW \$ 1,400
 Woodland Pattern Inc.
 OP: Writing Workshops at Woodland Pattern \$ 1,000
 PAN: Sampler Series \$ 3,400

MINOCQUA
 Lakeland Performing Arts Association
 PAN: LPAA community concert series \$ 2,000

MONROE
 Monroe Arts & Activities Center
 AIE: Susan Gardels, Sylvia Wallach Residency \$ 1,168
 CG: Challenge Grant \$ 852
 OP: Michael Shaughnessy \$ 350
 PAN: 1986-87 Performance Series \$ 4,267

MT. HOREB
 Song of Norway Festival Ltd.
 OP: Song of Norway orch & mkt
 support & enhancement \$ 1,000

NEENAH
 Bergstrom-Mahler Museum
 OP: SHARE (Shared Arts Resources) \$ 8,000

NEW GLARUS
 New Glarus High School
 AIE: Creative and Technical Aspects of
 Video Production, Michael Reano \$ 499

ONEIDA
 Oneida Tribal School
 AIE: Iroquois Costume Designs, Shelia S. Smith \$ 1,700
 Mamie Ryan
 FAP: Oneida basketry \$ 1,820

OREGON
 Oregon School District
 AIE: Dimensions in Dreams: A Pottery/
 Sculpture Experience, Bill Grover \$ 1,095

ORFORDVILLE
 Parkview School District
 AIE: Learning about Mime, Friends Mime Theatre \$ 2,147

OSHKOSH
 Paine Art Center & Arboretum
 APS: Theodore Robinson, an
 American Impressionist \$ 7,650

PLATTEVILLE
 UW-Platteville
 PAN: 1986-87 SAB Performing Arts Season \$ 8,000
 Wisconsin Shakespeare Festival
 OP: 1987 Wisconsin Shakespeare Festival \$ 1,500

PRAIRIE DU CHIEN
 Prairie du Chien Committee for the Performing Arts
 PAN: Support for artists fees for 86-87 season \$ 8,000

PULASKI
 Pulaski High School Drama Club
 AIE: Alexis Lauren and Laurie Willets
 Residencies, John A. Young \$ 1,210

RACINE
 Lisa Englander
 IP: Explorations in Bookmaking \$ 1,923
 Lighthouse Program
 AIE: Lighthouse Renaissance,
 Reynaldo Hernandez \$ 1,432
 Racine Arts Council
 CG: Challenge Grant \$ 2,202

RHINELANDER
 Northern Arts Council
 CG: Challenge Grant \$ 250
 Rhinelander Children's Art Program
 AIE: Ko-Thi Middle School Residency,
 Ko-Thi Dance Company \$ 1,336

RICE LAKE
 Barron County Campus Foundation
 PAN: Fine Arts Series \$ 500
 Red Cedar Symphony
 OP: Barron County Campus Foundation, Inc. \$ 1,220

ROSHOLT
 Rosholt Elementary School
 AIE: Tell Me A Story, Mark Wagler \$ 1,498

SAUK CITY
 David Erickson
 IP: Raising Crane \$ 750
 IP: Raising Crane: The Gathering \$ 1,468

SEYMOUR
 Shelia S. Smith
 FAP: Traditional Iroquois Costume \$ 1,365

SHEBOYGAN
 John Michael Kohler Arts Center
 APS: Explorations \$21,114
 Sheboygan Area School District
 AIE: Artists in Technology, Mark S. Merline \$ 4,900
 Sheboygan Arts Foundation
 PAN: FOOTLIGHTS Performing
 Arts Subscription Series \$ 5,045
 Sheboygan Symphony Orchestra
 OP: Choral Subscription Concert \$ 900
 OP: The Major Subscription
 Concert of the Season \$ 500
 Thomas C. Uebelherr
 IP: Sculpture Installations \$ 1,400

SHOREWOOD
 David M. Kenney
 IP: Now and Then \$ 650

SISTER BAY
 Gary Jones
 IP: UP FROM THE FIELDS: Production \$ 2,257

SPRING GREEN
 American Players Theatre Inc.
 APS: Training & Research Academy \$31,500

STEVENS POINT
 William T. Lawlor
 FEL: Literary Arts-Fiction \$ 5,000
 ShoWagon
 OP: Rest & Replacement of
 Technical Support Systems \$ 1,250
 UW-Stevens Point
 PAN: Concert/Fine Arts Series Artists \$ 6,500

STOUGHTON
 Mike Weber
 IP: Dream Beast (Large, multi-colored,
 clay sculpture) \$ 741

STURGEON BAY

School District of Sevastopol
 AIE: Musical Theater, Rhonda Cundy \$ 903

SUPERIOR

Bradley Andrew Bombardier
 FEL: Music Composition-Chamber \$ 3,333
 Anthony Bukoski
 IP: Love Me Tender and Other Stories \$ 2,000

SUSSEX

Hamilton School District
 AIE: Improving Oral Language Skills
 Through Storytelling, Mark Wagler \$ 1,744

VERONA

Verona High School
 AIE: Integrating the Arts at Verona High School,
 Trinkle Brass Works Inc. \$ 3,266
 OP: Composing and Performing a
 Musical Work of Art \$ 1,548

WATERLOO

Waterloo Elementary School
 AIE: Kanopy Dance Theater Residency,
 Kanopy Dance Inc. \$ 1,626

WAUKESHA

Save-A-Farm Inc.
 OP: Wern Farm Cultural Arts Center Master Plan \$ 2,500
 Waukesha Arts Center
 OP: Mixed Media Mural \$ 550
 Waukesha Civic Theatre
 OP: PARTAKE \$ 1,861

WAUSAU

Leigh Yawkey Woodson Art Museum
 APS: Momentum for Excellence \$14,175

The Performing Arts Foundation

OP: Grand Opening Festival of the
 Grand Theater \$ 1,000

PAN: 1986-87 Lively Arts Series \$ 4,500

Mark David Sisson

IP: Reich and Rule \$ 1,500

WAUWATOSA

Wilson Elementary School
 AIE: Dance Residency, Melanie Panush \$ 1,800

WESTFIELD

Westfield Elementary School
 AIE: Storyteller "Westfield From
 Past to Present", Reid Miller \$ 918

WHITEFISH BAY

Elma Gonzales Radke
 IP: Folklorico Hispano Dance Concert \$ 900

IP: Arte Hispano: Hispanic Performing
 Arts Concert \$ 450

WHITEWATER

Friends of Poetry
 OP: Poetry in Performance: New Age Writing \$ 950

UW-Whitewater

PAN: 1986-87 Series \$20,650

WISCONSIN DELLS

Wisconsin Dells Elementary School
 AIE: Interdisciplinary Arts in Action for
 Wisconsin Dells, Stephen A. Titra \$ 1,973

WISCONSIN RAPIDS

Arts Council of South Wood Co.
 OP: Visual Art - Mural \$ 1,000

WITTENBERG

Lauren Little Wolf
 FAP: Winnebago basketry & miniature baskets \$ 1,820

Violet Whitewing
 FAP: Winnebago basketry \$ 1,365

PERCENT FOR ART PROJECTS

Contracts for the following building projects were negotiated in FY-87 and artworks were completed and installed within that time period unless noted with (*).

GREEN BAY

UW-Green Bay Student Commons
 Commissioned Artwork: Neon
 Artist: Byron Skowronski, Milwaukee, WI
 Contract Date: November 24, 1986 \$ 2,500

HAYWARD

Department of Natural Resources Nursery
 Direct Purchase: Wood Sculpture
 Artist: Michael Christopherson, Eau Claire, WI
 Contract Date: August 1, 1986 \$ 1,000

MADISON

UW-Madison Computer Science Center
 Commissioned Artwork: Design of Plaza
 Artist: Andrea Blum, New York, NY
 Contract Date: April 13, 1987 \$ 15,000

UW-Madison Home Economics Building
 Direct Purchase: Fiber/Textile Work
 Artist: Chad Alice Hagen, Bloomfield Hills, MI
 Contract Date: April 30, 1987 \$ 500

Direct Purchase: Graphics/Handmade Paper
 Artist: Marjorie Mau, Green Bay, WI
 Contract Date: April 30, 1987 \$ 700

(The following was a special project with a separate allocation.)
 General Executive Facility 3 Plaza
 Commissioned Artwork: Granite Environmental Sculpture
 Artist: Lloyd Hamrol, Venice, CA
 Contract Date: July 9, 1986 \$ 50,000

MENOMONIE

UW-Stout Graphics & Photography Lab
 Commissioned Artwork: Steel & Redwood Sculpture
 Artist: Carl Reed, Colorado Springs, CO
 Contract Date: December 19, 1986 \$ 6,000

UW-Stout Memorial Student Center*
 Commissioned Artwork: Granite Sculpture
 Artist: Robert Curtis, Milwaukee, WI
 Contract Date: September 10, 1986 \$ 14,200
 (with \$10,000 match by UW for site preparation)

MILWAUKEE

Havenwoods Environmental Center*
 Commissioned Artwork: Banners
 Artist: Lois Ehlert, Milwaukee, WI
 Contract Date: May 8, 1987 \$ 2,000
 (with \$2,776 match by DNR)

OCONOMOWOC

Oconomowoc Armory*
 Commissioned Artwork: Photography
 Artist: Dale Guldán, Waukesha, WI
 Contract Date: May 8, 1987 \$ 2,200

OSHKOSH

Oshkosh Correctional Institution*
 Commissioned Artwork: Stained Glass
 Artist: Shelly Vurs, Oakland, CA
 Contract Date: July 8, 1986 \$ 17,000

Commissioned Artwork: Stained Glass
 Artist: Charlotte Paul, Bloomfield, IN
 Contract Date: October 16, 1986 \$ 29,000

PORTAGE

Columbia Correctional Institution*
 Commissioned Artwork: Painted Metal Sculpture
 Artist: Christiane Martens, Urbana, IL
 Contract Date: October 3, 1986 \$ 50,000

Commissioned Artwork: Fiber/Quilted Work
 Artist: Joyce Carcy, Madison, WI
 Contract Date: August 12, 1986 \$ 6,200

Commissioned Artwork: Painting
 Artist: Paul Donhauser, Oshkosh, WI
 Contract Date: August 19, 1986 \$ 10,700

Commissioned Artwork: Painting
 Artist: Frederick Horenberger, Plymouth, WI
 Contract Date: October 3, 1986 \$ 1,600

Commissioned Artwork: Serigraphy
 Artist: Maline Robinson, Madison, WI
 Contract Date: August 19, 1986 \$ 3,800

Commissioned Artwork: Lexon Wall Relief
 Artist: Franklin Boggs, Beloit, WI
 Contract Date: March 25, 1987 \$ 8,200

SPARTA

State Patrol Academy, Fort McCoy
 Commissioned Artwork: Wood Wall Relief
 Artist: Allan Crawford, San Francisco, CA
 Contract Date: September 9, 1986 \$ 13,800

SPOONER

Department of Natural Resources Headquarters
 Direct Purchase: Scratchboard Drawings
 Artist: Dorothy Haas, Milwaukee, WI
 Contract Date: August 1, 1986 \$ 1,125

Direct Purchase: Ceramic Relief Sculpture
 Artist: Joyce Fritz, Green Bay, WI
 Contract Date: August 1, 1986 \$ 875

WAUKESHA

Waukesha Driver License Facility
 Direct Purchase: Painting
 Artist: Rebecca Crowell, Ossco, WI
 Contract Date: May 11, 1987 \$ 1,000

WHITEWATER

UW-Whitewater Computer Science Center*
 Commissioned Artwork: Painted Canvas & Steel Wall Relief
 Artist: Arthur Kdáv, Mineral Point, WI
 Contract Date: April 22, 1987 \$ 8,800

FINANCE REPORT FOR FISCAL YEAR 1987

The purpose of this report is to reflect actual expenditures.

Sources of Funds

Prior Year Balance Forward	\$ 91,116
State-General Purpose Revenue	1,159,294
Federal Grants	511,700
Total Income	\$ 1,762,110

Expenditures

General and Program Operations	\$ 557,461
Aids to Individuals & Organizations	
Grant Programs	
Artists-in-Education	\$ 97,772
Artistic Program Support	304,000
Challenge Grant/Locals Test Program	132,320
Fellowships	39,999
Performing Arts Network-Wisconsin	116,471
Project Grants, Individual & Organizational	309,900
Salary Assistance	76,052
Traditional and Ethnic Arts	14,493
Total Grants	\$ 1,091,007
Other Aids	
Arts Administration Interns	17,585
Arts Midwest Dues	27,322
Arts World	20,000
Total	\$ 64,907
Total Expenditures	\$ 1,713,375
Funds Lapsed	4,086
Balance Forward	44,649
Total	\$ 1,762,110

In addition, \$75,600 was expended under Percent for Art program contract awards to artists.

MEMBERS OF THE BOARD

1986-87

Jess Brownell, Milwaukee
Duane DeLorme, Green Bay
Joseph Garton, Waunakee
Lloyd Herrold, Milwaukee
Cynthia Pitts, Milwaukee
Ben Sidran, Madison
Jeanne Tregoning, Shullsburg
Michael Walter, Neenah

TERMS COMPLETED APRIL 30, 1987

Patricia Blankenburg, Madison
Richard Hawkins, La Crosse
Karlyn Holman, Washburn
Benna Wilde, Beloit

APPOINTED MAY 1, 1987

Kathryn Burke, Milwaukee
Gloria Kirking, Portage
Olga Schleiter, La Crosse
Kathy Vanatta, Port Edwards

STAFF

Arley G. Curtz, Executive Secretary
Helen Ewing, Management Programs Director
Regina Flanagan, Percent for Art Coordinator
Mary Howards, Secretary
Amy Hutler, Receptionist
Debra Lapotka, Grants Assistant
Christine Manke, Arts Education Coordinator
Richard March, Traditional and Ethnic Arts Coordinator
Connie Miller, Fiscal Clerk
Paula McCarthy Panczenko, Grants Coordinator
Gretchen Thomson, Community & Information Development Coordinator

Cover: Milwaukee Ballet production of VIRGIN FOREST. Margo Sappington, Choreographer; Paul Schwartz, Composer. Members of the Company pictured are Robin Hoffman, Peter Schetter and Patrick Risenhoover. (Photo-Richard Brodzeller).